

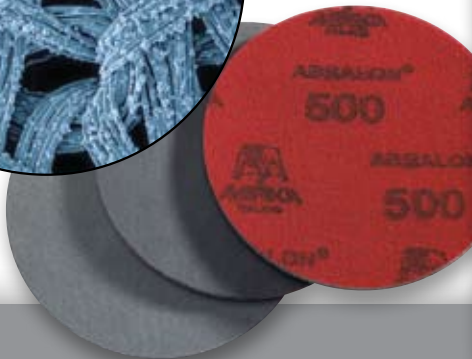
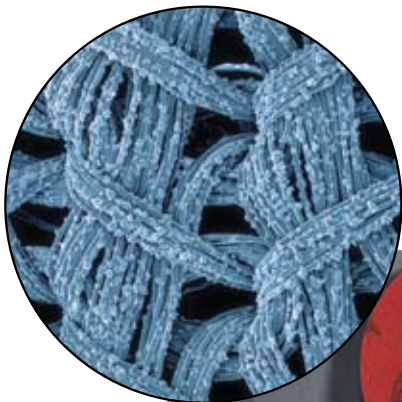


FACTORY DULL BALLS

- **EVERY TIME YOU FINISH BOWLING** – Use an **Oil-free Microfiber Towel** combined with **Powerhouse Clean n' Dull**.
- **EVERY 15-20 GAMES** – Lightly sand the entire surface of the ball with **Abralon Pads**. Use the appropriate grit to maintain your ball's original reaction. If your ball's factory finish is 4000 grit, then sand the ball with 2000 grit first, then use 4000 grit.
- **EVERY 60 GAMES** – Resurface your ball. Do not skip any steps. Start with 500 Grit Abralon and proceed with the following grits (1000, 2000, 4000), ending on the final surface you are targeting. Make sure you read the final finishing steps as ball finishes can vary.
- **EVERY 100 GAMES** – Ball is due for a **Powerhouse Hook Again** servicing.

FACTORY POLISHED BALLS

- **DAILY AFTER BOWLING** – **Oil-free Microfiber Towel** combined with **Powerhouse Energizer Cleaner**.
- **EVERY 10 GAMES** – Polish the surface of the ball with a cotton towel and **Powerhouse Factory Finish Polish**.
- **EVERY 30 GAMES** – Lightly sand the surface of the ball with **Abralon Pads**, and re-polish with **Powerhouse Factory Finish Polish**. Use 4000 grit then apply factory finish.
- **EVERY 60 GAMES** – Bowling ball due for a full resurface.
- **EVERY 100 GAMES** – Bowling ball due for a **Powerhouse Hook Again** service.



ADDITIONAL TIPS

BALL ENHANCEMENT

- For more backend motion during bowling, use **Powerhouse Power Wash** (provides 2-3 more boards in the backend).
- For more shine on the surface during bowling, use **Powerhouse Reaction Plus** (gives 1-3 feet added length).
- Both approved for use during USBC Sanctioned competition.

BALL RESTORATION

- For older balls, or balls that have not been regularly maintained, a **Powerhouse Hook Again** service followed by a full resurface is recommended.

MAINTENANCE CHECKLIST

		FACTORY POLISHED BALLS	FACTORY DULL BALLS
Daily After Bowling	Oil-free Microfiber Towel combined with Powerhouse Energizer Cleaner	x	x
Every 15-20 Games	Lightly sand the surface of the ball with Abralon Pads ; use appropriate grit to maintain original reaction		x
Every 10 Games	Polish the surface of the ball with a cotton towel and Powerhouse Factory Finish Polish	x	
Every 30 Games	Lightly sand the surface of the ball with Abralon Pads , and re-polish with Powerhouse Factory Finish Polish	x	
Every 60 Games	Ball due for a full resurface	x	x
Every 100 Games	Ball due for a Powerhouse Hook Again service	x	x



Q: “MY BALL IS HOOKING LESS THAN USUAL. HOW CAN I GET THAT HOOK BACK?”

A: HERE’S HOW TO ALTER THE SURFACE OF THE BALL TO BRING BACK ITS HOOK:

- 1) Throw some practice balls before your next game. Watch your ball’s performance. Then, using an **Abralon Pad** with 4000 Grit, lightly sand the entire surface of the ball. A ball spinner isn’t needed as long as you sand the ENTIRE ball. Throw your ball again and watch its ball motion. If you need earlier hook, sand the ball again, this time with a 2000 Grit **Abralon Pad**, and work your way down to 1000 Grit Abralon or in extreme cases, even 500 Grit **Abralon Pad**.
- 2) During practice, if you need more hook, then you can use **Powerhouse Clean n’ Dull** on your ball. Make sure you cover the entire ball when treating your ball.

Q: “MY BALL IS ROLLING VERY FAST AND IS LOSING ITS HOOK IN THE BACKEND. WHAT’S HAPPENING?”

A: YOUR BALL MIGHT BE USING ENERGY TOO QUICKLY, THUS IT HAS NO HOOK ABILITY AT THE BACKEND OF THE LANE. CONSIDER THESE POINTS:

IF YOUR BALL IS POLISHED:

Take it to your pro shop and have the cover freshened with **Powerhouse Extender Polish**. This will give your ball a longer skid through the front of the lane, saving its energy for the backend.

IF YOUR BALL IS SANDED:

Take your ball to your pro shop and have **Powerhouse Factory Finish Ball Polish** applied to it. This will greatly change the ball motion caused by your sanded surface. Your ball will retain energy through the front of the lane and have a strong backend reaction.

If you are in need of even more length down the lane, then use **Powerhouse Extender Ball Polish**. This will give even more length than Factory Finish.

